

Kuranda Slim Line Dog Bed

assembly instructions

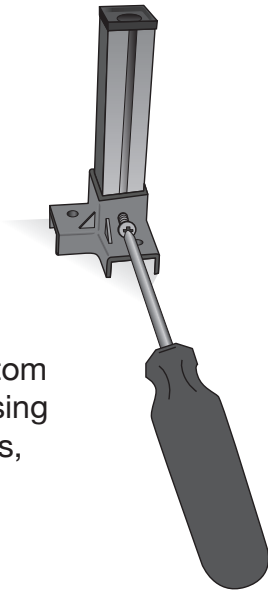
rev. 6.28.16

PARTS LIST

(2) long and (2) short frame rails
(4) top and (4) bottom corner brackets
(4) legs with leg protectors

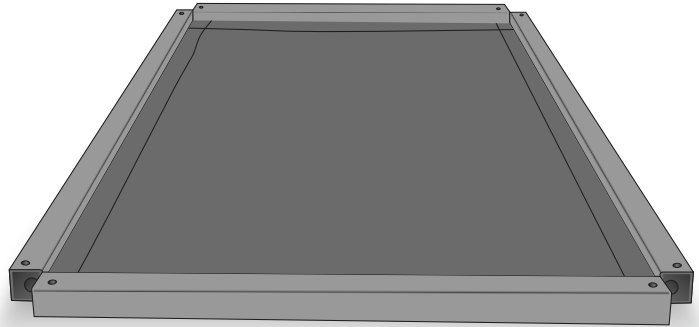
(8) machine screws, (8) lock nuts, (8) washers
(4) self tapping screws
(1) Fabric

Step 1



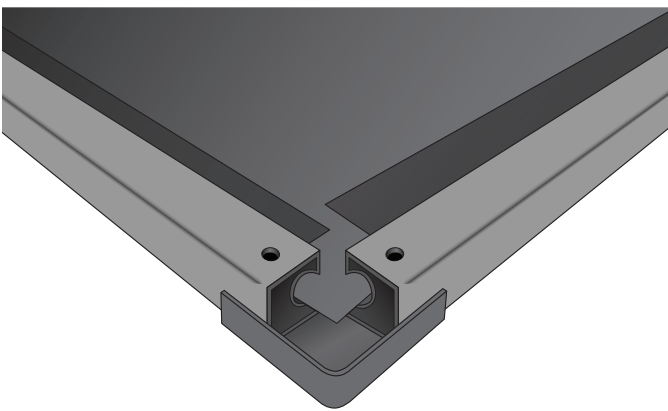
Attach legs to bottom corner brackets using self tapping screws, tighten fully.

Step 2



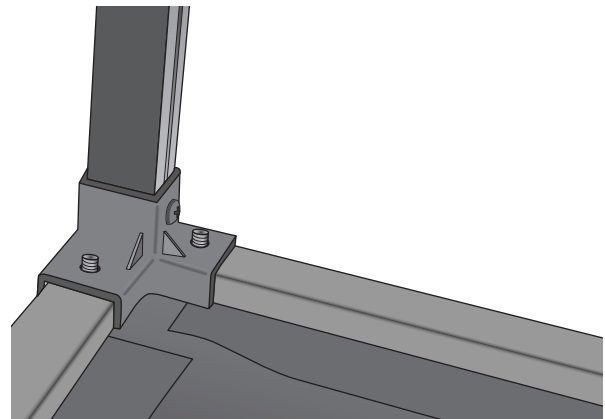
Lay fabric face down on flat surface. Attach frame rails to fabric by inserting fabric edge into rail channels.

Step 3



Position top corner brackets at each corner, insert screws through brackets and frames.

Step 4



Place bottom corner brackets and secure with washers and lock nuts.

Step 5



Turn bed right side up and tighten screws and nuts.